



## Learning Exploration: Our Local Area

Children are now aware of key places around them that they visit regularly, such as their home, school and places in the community. Through this Learning Exploration, we will explore the following:

- How do we fit into the local area? What is our place?
- What are the key places we visit in our local area? Have they always been there? How have they changed over time?
- Are there some places that are significant to the children? Are these the same for all members of our community? Do we have different places that are special to other members of our community?
- Simple geographical tools—maps, starting in the classroom.



## Hook back to previous Language Led Learning concepts:

- Emotions
- Family and Home
- Food
- Size and weight

## Journey through the exploration



Experiences this term may include:

- Visits to explore different places and describe what we see:
  - St John's Garden Centre
  - Jungle Land

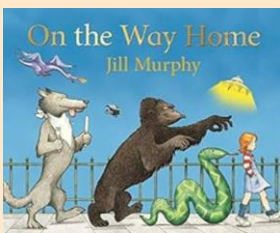
## New vocabulary to be taught:

- Road
- Street
- Village
- Town
- City
- Map
- Place
- Community

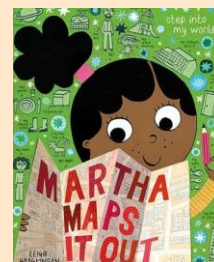
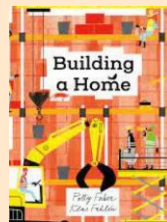
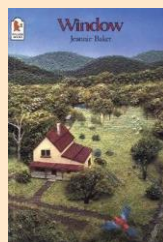
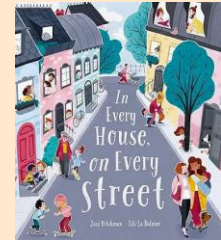
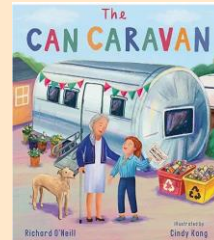
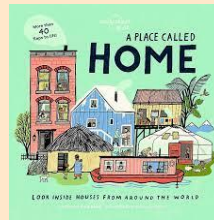
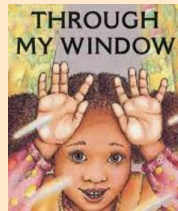


### Key Texts

#### Talk for Writing Texts



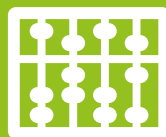
#### Reading for Pleasure Texts – a range of texts, including:



### Maths

Children will explore:

- Instant recognition of numbers to 5
- Composition of numbers to 5
- Counting and order of numbers to 5
- Comparison of quantities to 5
- Mass and capacity



### PSED/Jigsaw PSHE – Dreams and Goals

Children will learn to:

- understand that if they persevere they can tackle challenges
- talk about a time they didn't give up until they achieved their goal
- set a goal and work towards it
- use kind words to encourage people
- understand the link between what they learn now and the job they might like to do when they're older
- say how they feel when they achieve a goal and know what it means to feel proud



# Parent/Carer Curriculum Information

## Reception

### Opportunities to build cultural capital

Cultural capital is the essential knowledge that pupils need to be educated citizens, introducing them to the best that has been thought and said, and helping to engender an appreciation of human creativity and achievement.

At NCSPA, we aim to build cultural capital through experiences such as trips, visitors, music and providing local links.

For Reception, options this term may include:

- Nature/seasonal walk.
- River walk
- Museum visit

### Opportunities for shared outcomes

Children will have the opportunity to produce or take part in one or more of the following:

Creating:

- Model homes
- Home/local area art



### Opportunities to address Equality, Diversity and Inclusion

Children will be given opportunities to explore the following questions:

- How are the places we live in the same?
- How are they different?
- How do the places we live in differ from those other children live in around the world?



### Further curriculum information

If you would like any further information regarding the curriculum, please:

- Speak to Mr Crewe, Mrs King or Ms Kent-Holman
- See your child's class information on Seesaw.
- Contact Mrs Louisa Buttel (Curriculum Leader), through the school office.
- Visit the Curriculum pages on our website.

