



# Supporting Pupils with Medical Conditions Policy

**Date Adopted:** 19<sup>th</sup> July 2023  
**Author/owner:** Board of Trustees  
**Review:** Triennial

**NB.** 'Trustees' means the Directors referred to in the Trust's Articles of Association

**History of most recent policy changes**

<b>Version</b>	<b>Date</b>	<b>Page</b>	<b>Change</b>	<b>Origin of Change e.g. TU request, Change in legislation</b>
V1.0	July 2023	New Policy		

## Contents

History of most recent policy changes.....	2
Aims.....	4
Legislation and statutory responsibilities .....	4
Roles and responsibilities.....	4
Equal opportunities.....	6
Being notified that a child has a medical condition .....	6
Individual healthcare plans.....	7
The Process for Developing IHPs .....	9
Managing medicines .....	9
Unacceptable practice.....	10
Emergency procedures .....	11
Training .....	11
Record keeping .....	12
Liability and indemnity .....	12
Complaints .....	12
Monitoring arrangements .....	12
Links to other policies.....	13

This policy sets out our approach to supporting pupils with medical conditions across The Tarka Learning Partnership.

The named person for implementing this policy at Newport Community School Primary Academy is Laura Kies, Headteacher.

The Managing Medicines section has been adapted to reflect how we implement the policy in our school.

## Aims

This policy aims to ensure that:

- Pupils, staff and parents understand how schools in our Trust will support pupils with medical conditions
- Pupils with medical conditions are properly supported to allow them to access the same education as other pupils, including school trips and sporting activities

## Legislation and statutory responsibilities

This policy meets the requirements under [Section 100 of the Children and Families Act 2014](#), which places a duty on the board of trustees to make arrangements for supporting pupils at their school with medical conditions.

It is also based on the Department for Education's (DfE) statutory guidance: [Supporting pupils at school with medical conditions](#).

This policy also complies with our funding agreement and articles of association.

## Roles and responsibilities

### The board of trustees

The board of trustees has ultimate responsibility to make sure there are arrangements to support pupils with medical conditions across the trust. Although the trust delegates certain duties to different levels as outlined below, the board is still accountable for making sure the trust is compliant with the requirements in the above legislation and guidance.

The board will also determine and approve this policy.

### CEO

The CEO / Director for Inclusion & Safeguarding (DoIS) will:

- Oversee and support the headteacher of each school in carrying out their duties
- Highlight any issues found across the trust to the board of trustees

### **The headteacher**

The headteacher of each school will:

- Make sure all staff are aware of this policy and understand their role in its implementation
- Ensure that there is a sufficient number of trained staff available to implement this policy and deliver against all IHPs, including in contingency and emergency situations
- Assess training needs and commission necessary training in line with trust procedures
- Co-ordinate and attend meetings to discuss and agree on the need for IHPs
- Take overall responsibility for the development of IHPs
- Contact the school nursing service in the case of any pupil who has a medical condition that may require support at school, but who has not yet been brought to the attention of the school nurse
- Make sure systems are in place for obtaining information about a child's medical needs and that this information is kept up to date
- Make sure cover arrangements are made in the case of staff absence, and the supply teachers are briefed

### **Staff**

Supporting pupils with medical conditions during school hours is not the sole responsibility of one person. Any member of staff at the school may be asked to provide support to pupils with medical conditions, although they will not be required to do so. This includes the administration of medicines.

Those staff who take on the responsibility to support pupils with medical conditions will receive sufficient and suitable training, and will achieve the necessary level of competency before doing so.

Teachers will take into account the needs of pupils with medical conditions that they teach. All staff will know what to do and respond accordingly when they become aware that a pupil with a medical condition needs help.

### **Parents**

Parents will:

- Provide the school with sufficient and up-to-date information about their child's medical needs
- Be involved in the development and review of their child's IHP and may be involved in its drafting
- Carry out any action they have agreed to as part of the implementation of the IHP e.g. provide medicines and equipment

## **Pupils**

Pupils with medical conditions will often be best placed to provide information about how their condition affects them.

Pupils will be fully involved in discussions about their medical support needs and contribute as much as possible to the development of their IHPs. They are also expected to comply with their IHPs.

## **School nurses and other healthcare professionals**

Our school nursing services will notify the relevant school when a pupil has been identified as having a medical condition that will require support in school. This will be before the pupil starts school, wherever possible.

Healthcare professionals, such as GPs and paediatricians, will liaise with our school nurses and notify them of any pupils identified as having a medical condition.

## **Equal opportunities**

Our trust is clear about the need to actively support pupils with medical conditions to participate in school trips and visits, or in sporting activities, and not prevent them from doing so.

The trust and the individual school will consider what reasonable adjustments need to be made to enable these pupils to participate fully and safely on school trips, visits and sporting activities.

Risk assessments will be carried out so that planning arrangements take account of any steps needed to ensure that pupils with medical conditions are included. In doing so, pupils, their parents and any relevant healthcare professionals will be consulted.

## **Being notified that a child has a medical condition**

When the school is notified that a pupil has a medical condition, the process outlined below will be followed to decide whether the pupil requires an IHP. This process will be followed by all schools in the trust.

The school will make every effort to ensure that arrangements are put into place within 2 weeks, or by the beginning of the relevant term for pupils who are new to our school.

## Individual healthcare plans

The Head teacher has overall responsibility for the development of IHPs for pupils with medical conditions. This has been delegated to the SENDCo.

Plans will be reviewed at least annually, or earlier if there is evidence that the pupil's needs have changed.

Not all pupils with a medical condition will require an IHP. It will be agreed with a healthcare professional and the parents when an IHP would be inappropriate or disproportionate. This will be based on evidence. If there is not a consensus, the headteacher will make the final decision.

Plans will be drawn up in partnership with the school, parents and a relevant healthcare professional, such as the school nurse, specialist or paediatrician, who can best advise on the pupil's specific needs. The pupil will be involved wherever appropriate.

IHPs will be linked to, or become part of, any statement of special educational needs (SEN) or education, health and care (EHC) plan. If a pupil has SEN but does not have a statement or EHC plan, the SEN will be mentioned in the IHP.

### What is included in the plan

Plans will be developed with the pupil's best interests in mind and will set out:

- What needs to be done
- When
- By whom

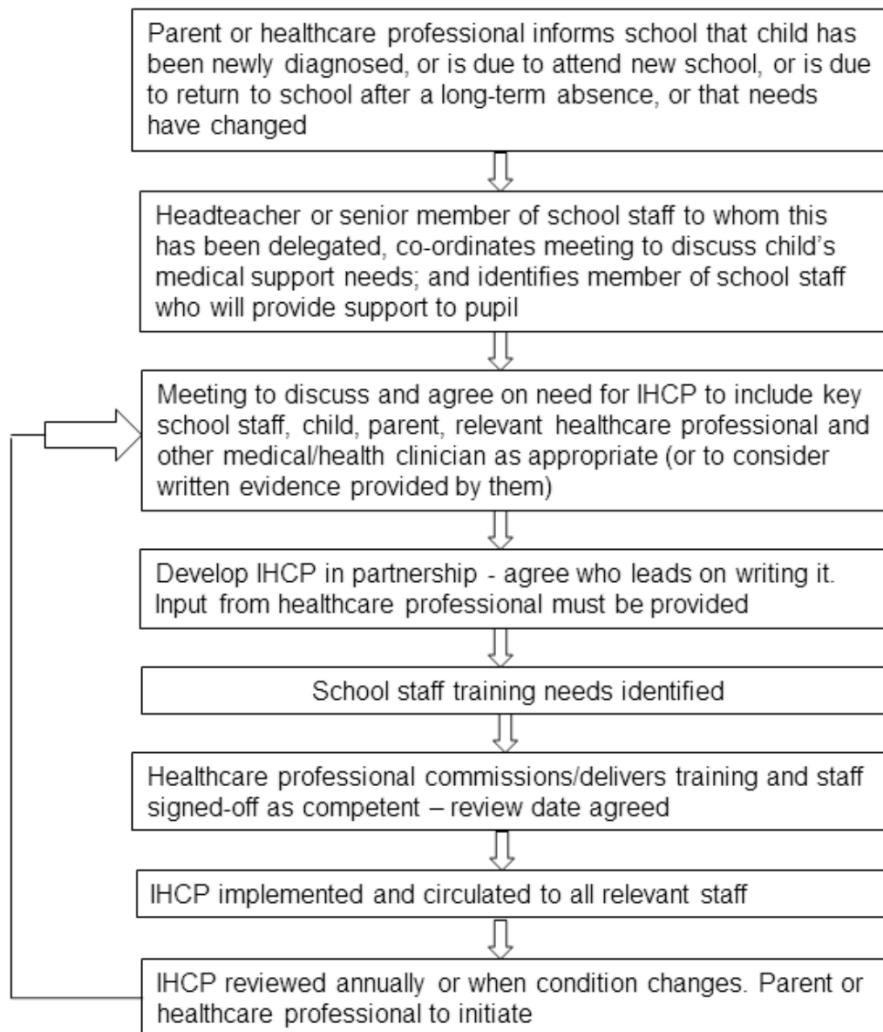
The level of detail in the plan will depend on the complexity of the child's condition and how much support is needed. The SENDCo will consider the following when deciding what information to record on IHPs:

- The medical condition, its triggers, signs, symptoms and treatments
- The pupil's resulting needs, including medication (dose, side effects and storage) and other treatments, time, facilities, equipment, testing, access to food and drink where this is used to manage their condition, dietary requirements and environmental issues, e.g. crowded corridors, travel time between lessons
- Specific support for the pupil's educational, social and emotional needs. For example, how absences will be managed, requirements for extra time to complete exams, use of rest periods or additional support in catching up with lessons, counselling sessions
- The level of support needed, including in emergencies. If a pupil is self-managing their medication, this will be clearly stated with appropriate arrangements for monitoring

- Who will provide this support, their training needs, expectations of their role and confirmation of proficiency to provide support for the pupil's medical condition from a healthcare professional, and cover arrangements for when they are unavailable
- Who in the school needs to be aware of the pupil's condition and the support required
- Arrangements for written permission from parents and the headteacher for medication to be administered by a member of staff, or self-administered by the pupil during school hours
- Separate arrangements or procedures required for school trips or other school activities outside of the normal school timetable that will ensure the pupil can participate, e.g. risk assessments
- Where confidentiality issues are raised by the parent/pupil, who the designated individuals to be entrusted with information about the pupil's condition will be
- What to do in an emergency, including who to contact, and contingency arrangements



## The Process for Developing IHPs



## Managing medicines

Prescription and non-prescription medicines will only be administered at the school:

- When it would be detrimental to the pupil's health or school attendance not to do so, **and**
- Where we have parents' written consent

The **only exception to this** is where the medicine has been prescribed to the pupil without the knowledge of the parents.

Wherever possible our preference is for parents and carers to manage prescribed medicine that require 3 or less doses per day at home. In exceptional circumstances, school will support the administration of prescribed medicines that require 3 doses per day but this needs to be agreed by the SENDCo or a member of the Senior Leadership Team in her absence.

Pupils under 16 will not be given medicine containing aspirin unless prescribed by a doctor.

Anyone giving a pupil any medication (for example, for pain relief) will first check maximum dosages and when the previous dosage was taken. Parents will always be informed.

Schools will only accept prescribed medicines that are:

- In-date
- Labelled
- Provided in the original container, as dispensed by the pharmacist, and include instructions for administration, dosage and storage

Schools will accept insulin that is inside an insulin pen or pump rather than its original container, but it must be in date.

All medicines will be stored safely. Pupils will be informed about where their medicines are at all times and be able to access them immediately. Medicines and devices such as asthma inhalers, blood glucose testing meters and adrenaline pens will always be readily available to pupils and not locked away.

Medicines will be returned to parents to arrange for safe disposal when no longer required.

### **Controlled drugs**

[Controlled drugs](#) are prescription medicines that are controlled under the [Misuse of Drugs Regulations 2001](#) and subsequent amendments, such as morphine or methadone.

A pupil who has been prescribed a controlled drug may have it in their possession if they are competent to do so, but they must not pass it to another pupil to use. All other controlled drugs are kept in a secure cupboard in the school office and only named staff have access.

Controlled drugs will be easily accessible in an emergency and a record of any doses used and the amount held will be kept.

### **Pupils managing their own needs**

Pupils who are competent will be encouraged to take responsibility for managing their own medicines and procedures. This will be discussed with parents and it will be reflected in their IHPs.

Pupils will be allowed to carry their own medicines and relevant devices wherever possible. Staff will not force a pupil to take a medicine or carry out a necessary procedure if they refuse, but will follow the procedure agreed in the IHP and inform parents so that an alternative option can be considered, if necessary.

### **Unacceptable practice**

Staff should use their discretion and judge each case individually with reference to the pupil's IHP, but it is generally not acceptable to:

- Prevent pupils from easily accessing their inhalers and medication, and administering their medication when and where necessary
- Assume that every pupil with the same condition requires the same treatment
- Ignore the views of the pupil or their parents
- Ignore medical evidence or opinion (although this may be challenged)
- Send children with medical conditions home frequently for reasons associated with their medical condition or prevent them from staying for normal school activities, including lunch, unless this is specified in their IHPs
- If the pupil becomes ill, send them to the school office or medical room unaccompanied or with someone unsuitable
- Penalise pupils for their attendance record if their absences are related to their medical condition, e.g. hospital appointments
- Prevent pupils from drinking, eating or taking toilet or other breaks whenever they need to in order to manage their medical condition effectively
- Require parents, or otherwise make them feel obliged, to attend school to administer medication or provide medical support to their pupil, including with toileting issues. No parent should have to give up working because the school is failing to support their child's medical needs
- Prevent pupils from participating, or create unnecessary barriers to pupils participating in any aspect of school life, including school trips, e.g. by requiring parents to accompany their child
- Administer, or ask pupils to administer, medicine in school toilets

### Emergency procedures

Staff will follow the school's normal emergency procedures (for example, calling 999). All pupils' IHPs will clearly set out what constitutes an emergency and will explain what to do.

If a pupil needs to be taken to hospital, staff will stay with the pupil until the parent arrives, or accompany the pupil to hospital by ambulance.

### Training

Staff who are responsible for supporting pupils with medical needs will receive suitable and sufficient training to do so.

The training will be identified during the development or review of IHPs. Staff who provide support to pupils with medical conditions will be included in meetings where this is discussed.

The relevant healthcare professionals will lead on identifying the type and level of training required and will agree this with the Head teacher. Training will be kept up to date.

Training will:

- Be sufficient to ensure that staff are competent and have confidence in their ability to support the pupils
- Fulfil the requirements in the IHPs
- Help staff to have an understanding of the specific medical conditions they are being asked to deal with, their implications and preventative measures

Healthcare professionals will provide confirmation of the proficiency of staff in a medical procedure, or in providing medication.

All staff will receive training so that they are aware of this policy and understand their role in implementing it, for example, with preventative and emergency measures so they can recognise and act quickly when a problem occurs. This will be provided for new staff during their induction.

### **Record keeping**

The school will ensure that written records are kept of all medicine administered to pupils. Parents will be informed if their pupil has been unwell at school.

IHPs are kept in a readily accessible place which all staff are aware of.

### **Liability and indemnity**

The board of trustees will ensure that the appropriate level of insurance is in place and appropriately reflects the trust's level of risk.

All the schools within the Trust are covered by the DfE's Risk Protection Arrangement.

### **Complaints**

Parents with a complaint about their child's medical condition should discuss these directly with the SENDCo in the first instance. If the SENDCo cannot resolve the matter discussion involving the headteacher should take place. If the matter can still not be resolved then, they will direct parents to the trust's complaints procedure.

### **Monitoring arrangements**

This policy will be reviewed and approved by the board of trustees every 2 years.

## Links to other policies

This policy links to the following policies:

- Accessibility plan
- Complaints Policy
- Equality information and objectives
- First aid & the Administration of Medicines
- Health and Safety Policy
- Child Protection & Safeguarding Policy
- Special educational needs information report and Inclusion policy