



Learning Exploration: Wild Wind and Waves

This exploration aims to develop children's understanding of the natural resources in our local area as well as contrasting locations in the U.K. to enable them to deepen their understanding of how different locations are suited to particular energy sources. As Year Five are developing as independent global citizens, it is important for them to gain an understanding of where energy comes from and how they can actively support achieving the global goal of renewable and clean energy. Due to living in an area with a high concentration of wind energy (including proposed offshore wind farm developments) as well as large amounts of solar energy sources, this exploration allows children to evaluate the impact on the physical and human geography of our area in comparison to other locations. Investigating the impact of renewable energy sources will allow children to understand differing opinions, valuing and respecting these ideas but also developing confidence to forward their own views.

Hook into learning:

Year 5 will become experts in renewable energy and will be challenged to build their own working wind turbine in a collaborative group. This will launch 'Wild Wind and Waves' where children will explore and evaluate sources of renewable energy in our local area and beyond.

Journey through the exploration

Wild Wind and Waves will begin by exploring the UK as a whole and the renewable energy which is used here by answering the key question, **what are the different sources of renewable energy in the UK?** Following this, Year 5 will focus on renewable energy within our local area by exploring the key question **where are wind farms located in our locality and why are they located in these places?** This will allow children to use their mapping skills to justify why these locations are suitable. Throughout the exploration, children will evaluate the impact of renewable energy sources through the key questions **how is renewable energy changing land use in different locations (including Devon, Yorkshire and South Wales)? As well as, how is renewable energy affecting the lives of people?** Having explored the impact of local renewable sources, children will compare and contrast the impact of fossil fuels on human and physical geography evaluating the question, **how have some human processes made changes that are irreversible and how can we limit the impact of some of these processes?**



Parent/Carer Curriculum Information

Year 5

Linked subjects

Through this exploration, learning will be linked where appropriate, including in the following subjects:

- Geography
- Art
- Global Learning

The following subjects will be taught discretely:

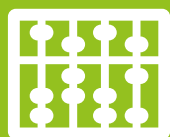
- Science
- Computing
- Music
- PE
- Primary Languages – French
- RE
- PSHE



Maths

Children will explore:

- Place Value
- Addition and Subtraction



Writing

Children will explore the following genres of writing:

- Narrative: *The Tear Thief* by Carol Ann Duffy
- Non-Fiction report: *The Everyday Journey of Ordinary Things* by Libby Deutsch and Valpuri Kerttula

Opportunities for writing across the curriculum:

- Interview within Geography
- Persuasive writing from a particular perspective – Geography



Opportunities to build cultural capital

Cultural capital is the essential knowledge that pupils need to be educated citizens, introducing them to the best that has been thought and said, and helping to engender an appreciation of human creativity and achievement.

At NCSPA, we aim to build cultural capital through experiences such as trips, visitors, music and providing local links.

For Year 5, options this term may include:

- Visit to a local wind farm
- A walk in our local area for observational drawing
- A visit from a local business who have had to diversify

Opportunities for shared outcomes

Children will have the opportunity to produce or take part in one or more of the following:

- A year group book based on the text 'Everyday Journeys of Renewable Energy'.
- Shared drama workshop
- Shared art outcome



Opportunities to address Equality, Diversity and Inclusion

Developing empathy for others, children will explore how different groups of people may feel about different energy sources and how their lives may be affected.

Pupils will also address equality, diversity and inclusion through their shared drama workshop.



Further curriculum information

If you would like any further information regarding the curriculum, please:

- Speak to Mrs Gregory, Mrs Williams or Miss Pennington.
- See your child's class information on Seesaw.
- Contact Mrs Louisa Buttel (Curriculum Leader), through the school office.
- Visit the Curriculum pages on our website.

